

## didBOX™ is extensible

It can monitor collisions using an optional **collision switch**

## didBOX™ is simple

It offers the **functionality** you want

## didBOX™ is reliable

There are **no moving parts** and no over-sophisticated electronics



**didBOX™**  
driver identification and control

Safeguard your **staff**, limit **stock-loss**, and maintain your **health and safety record** by eliminating the unauthorised use of your trucks.

**didBOX™** is Europe's leading driver identification and access control system for fleet vehicles.

**7 reasons** why **didBOX™** will help you keep control of your fleet:

- 1.** Limits equipment access to approved drivers only
- 2.** Records and measures equipment usage, by operator, date and time
- 3.** No expensive software or license required
- 4.** Integrates easily with simple spreadsheets
- 5.** Low setup and running costs
- 6.** Safeguards your Health & Safety record
- 7.** Saves you money!

**didBOX™**  
driver identification and control

The key to controlling your forklift fleet

## What do I need?



### didBOX™ Control Box

One of these is fitted to each vehicle with the reader typically fitted close to the ignition switch.



### Wand Reader and Software

The reader is attached to your PC and is used to program and download data from the keys using the didBOX software (on the CD provided).



### Keyfobs

The keyfobs are used to set up and operate the vehicles and download the recorded data.

## How do my drivers use the system?



Only one keyfob is required per driver.

You issue each authorised driver with a black keyfob programmed with their identification number and the categories of vehicle that they are allowed to drive.

When a driver presents an authorised black keyfob to the reader, the vehicle can now be started and the system will log the time and date with the ID of the driver.

If an unauthorised key is presented to the reader, the vehicle cannot be started.

This keyfob can be authorised to start any combination of vehicles.

## How do I set up the system?

Vehicle ID	Vehicle type	Category
112	Reach Truck Gas	2
168	Bendi	3
185	Ford Ranger Pickup	4
256	Transit	1
272	Forklift	5

Create a register for each truck in your fleet.

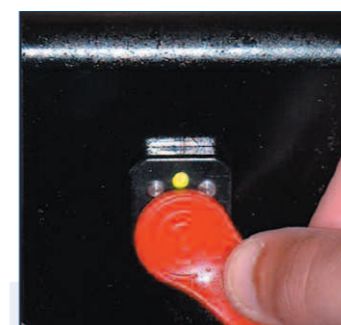
Assign a unique ID number to each driver.

Driver ID	Driver	Authorised categories
4001	David Smith	1 3 4
4002	Andy Jones	1 5
4003	Clive Robertson	2 4
4004	Tim Parsons	1 2 3 4 5
4005	Ahmed Sing	3 5
4006	Alf Riemer	2 3 5
4007	Tony Grigg	1 2 3 4 5
4008	Julien Dupont	3 4 5

## How do I set up the truck?



Program a red keyfob with the desired category using the information from your fleet register, using the software and the wand reader.



Touch the red keyfob to the reader on the forklift truck. The LED will go green to show that the category is set.

## How do I download data from the system?



Program the blue keyfob to download the desired amount of data.



Download the data by presenting the blue keyfob to the truck's reader.

When the blue keyfob is presented to the wand reader, a spreadsheet is generated automatically.

## The data is the key to controlling your fleet.

The time and date is recorded alongside each driver's unique identification number, each time a driver logs on or off a vehicle.

Vehicle ID	Driver ID	Event log	Date	Time
168	4001	0	30/07/2006	13:31:16
168	4001	1	30/07/2006	13:31:22
168	4005	64	30/07/2006	17:31:22
168	4002	64	02/07/2006	12:10:58
168	4004	0	05/07/2006	12:25:17
168	4004	1	05/07/2006	13:15:47
168	4009	64	05/07/2006	13:19:37
168	4004	0	08/07/2006	14:27:25
168	4004	1	08/07/2006	15:03:05
168	4002	64	15/07/2006	15:11:37
168	4008	0	15/07/2006	15:55:57
168	4008	1	15/07/2006	22:25:14

0 = Authorised ON, 1 = Authorised OFF, 64 = Unauthorised access

The spreadsheet will tell you when it happened and who was responsible if a driver attempts to start a vehicle with an unauthorised keyfob.

didBOX™ The key to controlling your fleet